


# LUTSON

CATALOGUE  
[WWW.LUTSON.COM](http://WWW.LUTSON.COM)

GILT-LEATHER & PAPER  
FOR THE 21TH CENTURY.

As good as old  
Better than new

A close-up photograph of a person's hand pointing at a board displaying various leather samples. The samples are arranged in a grid and show different textures and colors, including dark brown, light brown, and black. In the background, there are technical drawings or sketches of a shoe or bag, suggesting a design or manufacturing process.

Over the years Lutson has set the standards for Gilt Leather.

From the early eighties on till the present day, our leathers stay unmatched in quality and aesthetics.

At Lutson we have decided to stick to tradition and fight the uniformity of this digital world.

Lutson Leathers as always,  
Made with Passion & "Savoir Faire".



# INDEX

- |                   |                    |
|-------------------|--------------------|
| 4. Abondance      | 44. Marot          |
| 10. Almohadon     | 48. Mandarin       |
| 12. Cartouche     | 52. Moncla         |
| 14. Curules       | 55. Nebraska       |
| 16. Deco          | 56. Nora           |
| 18. Double Damask | 58. Ottoman        |
| 21. Domino        | 62. Palmette       |
| 22. Dragon        | 64. Parot Panel    |
| 26. Eve           | 66. Plaisance      |
| 30. Fleurance     | 70. Soleil         |
| 34. Gerona        | 74. Torino Passion |
| 35. Grand Soleil  | 78. Utopia         |
| 36. Korfus        | 80. Verentuill     |
| 39. Lauderdale    | 84. Vernes         |
| 41. Laurier       | 86. Borders        |
|                   | 88. Prints         |



# Abondance

31,7 x 24,8"  
80,5 x 63cm  
**Left side**



origin : Flanders  
Circa 1650  
A full Polychrome Version  
on a silver ground



# Abondance

31,7 x 24,8"

80,5 x 63cm

**Right side**



*The classic baroque design can be seen in the Rubens House, Antwerp.*



Antependium in Vic Fezensac,  
Sainte-Fauste's Church, France





Made for W.H.Vanderbilt by the  
Herter Brother circa 1880.

This Side chair is one of the few  
surviving examples.

Here, upholstered with Lutson's  
Abundance.

Burgundy on a Rich Gilded  
Ground.



To be seen in the "American Wing" of the  
**Metropolitan Museum of Art, N.Y.**





*"Atelier Versace  
used gilded leather  
made by Lutson "*

*At the Parisian Haute  
Couture défilé  
1999 / 2000.*

*Naomi Campbell showed  
an gilded leather ensemble  
created by Atelier Versace.*

*Abondance, beige on a silver  
ground with gilded birds.*

*Photo from Vogue*

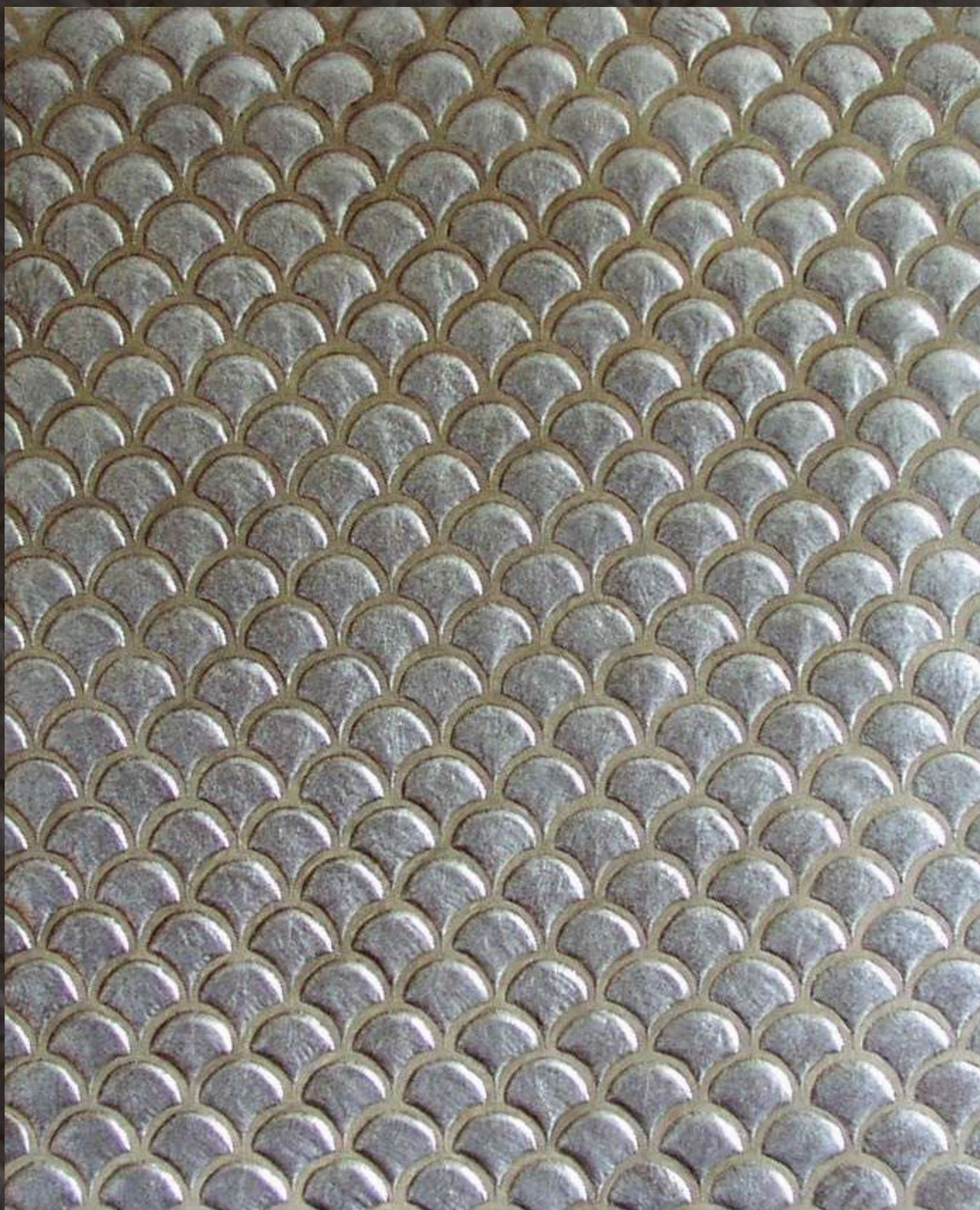






# Almohadon

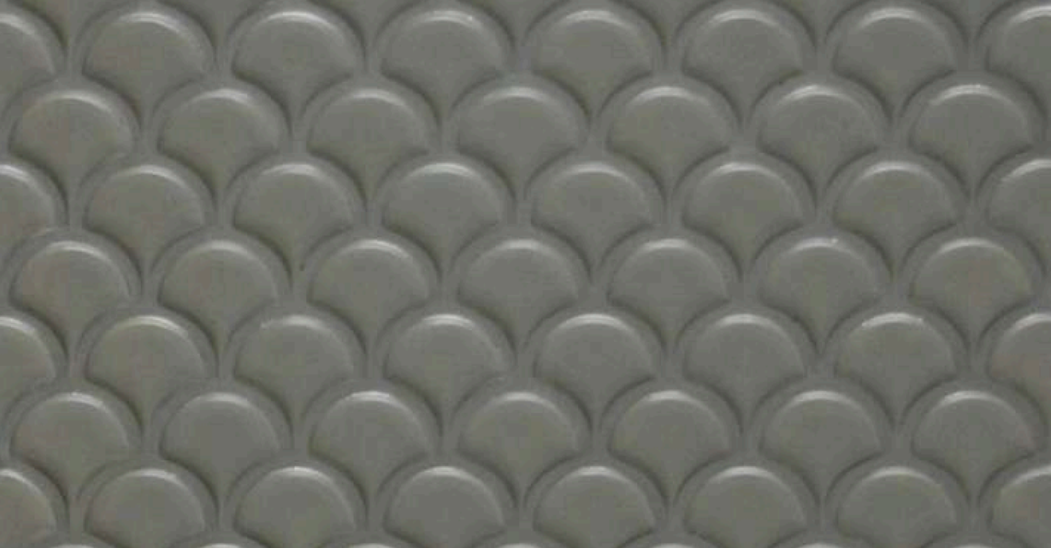
29,5 x 25,6"  
75 x 65cm



origin : Antiquity

A panel from circa 1500 is to  
be seen in the **Museu de l'Art  
de la Pell**, Spain.







# Cartouche

28,3 x 22"  
71,8 x 22,95cm

Origin: unknown

This design can be seen at the "Deutsches Tapeten Museum", Kassel Germany.

Circa 1750

This design has a left and a right hand panel. Here as a polychrome "custom" version





# Cartouche





# Curules

28,3 x 26"  
72 x 66 cm



origin : Antiquity



# Curules

28,3 x 26"  
72 x 66 cm



origin : Antiquity



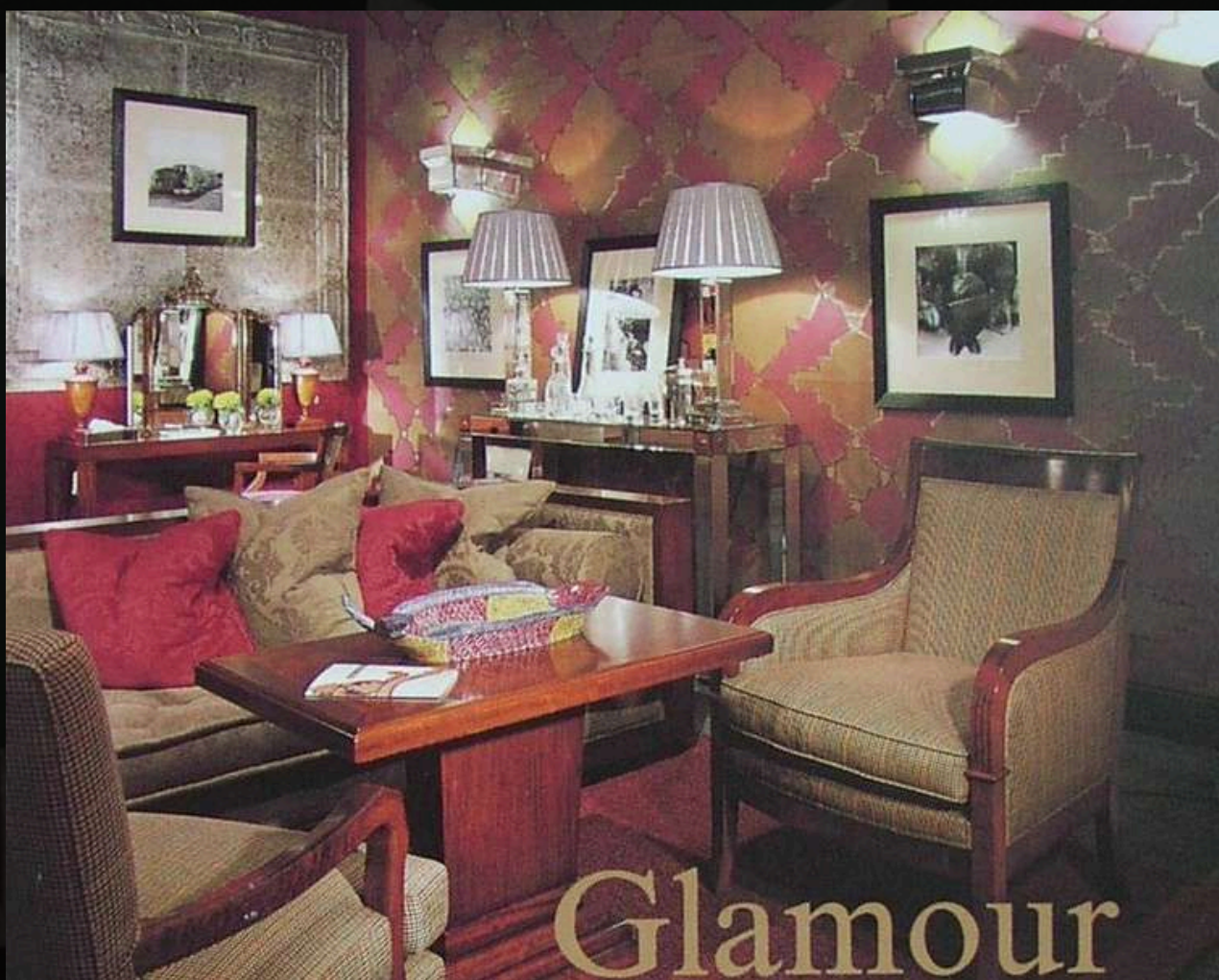
# Deco

35,6 x 25,6"  
90,5 x 65cm



origin : Lutson





*Décorex, London.*



# Double Damask

39,4 x 29,1"  
100 x 74 cm



a set of four sections is needed to create one panel





# Double Damask

a set of four sections is needed to create one panel

39,4 x 29,1"  
100 x 74 cm

origin : possibly Spain  
Circa 1680

Double Damask in a yacht.





Double Damask for Fitzgerald.



# Domino

31,5 x 22"  
80 x 56cm



origin : Lutson  
Based on a 17th century Spanish design.



# Dragon

30,5 x 23,4"  
77,5 x 59,5cm



origin : Flanders  
Circa 1750  
A polychrome version



# Dragon





At Sarum Chase, London.



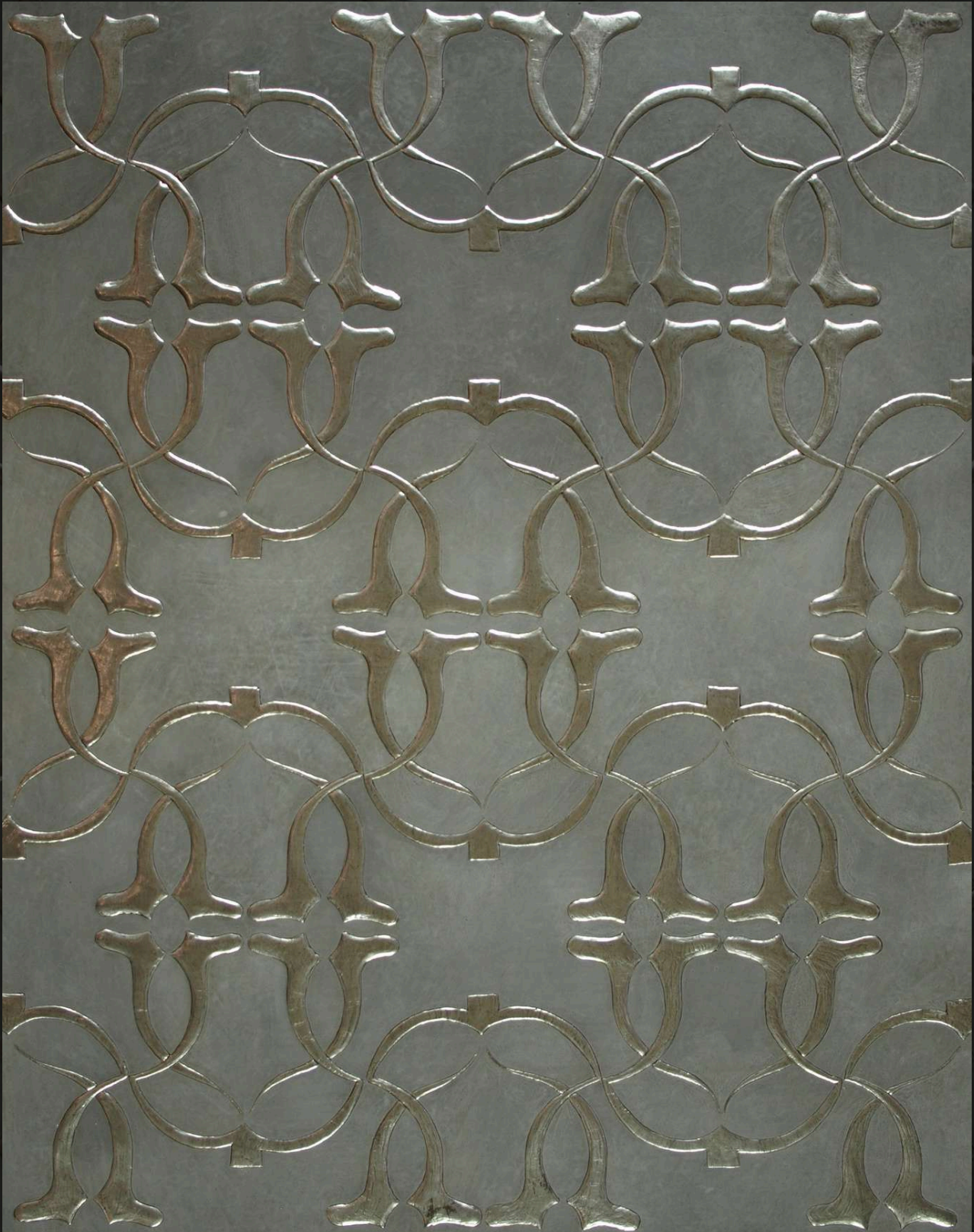






# Eve

34,6 x 26"  
88 x 69cm

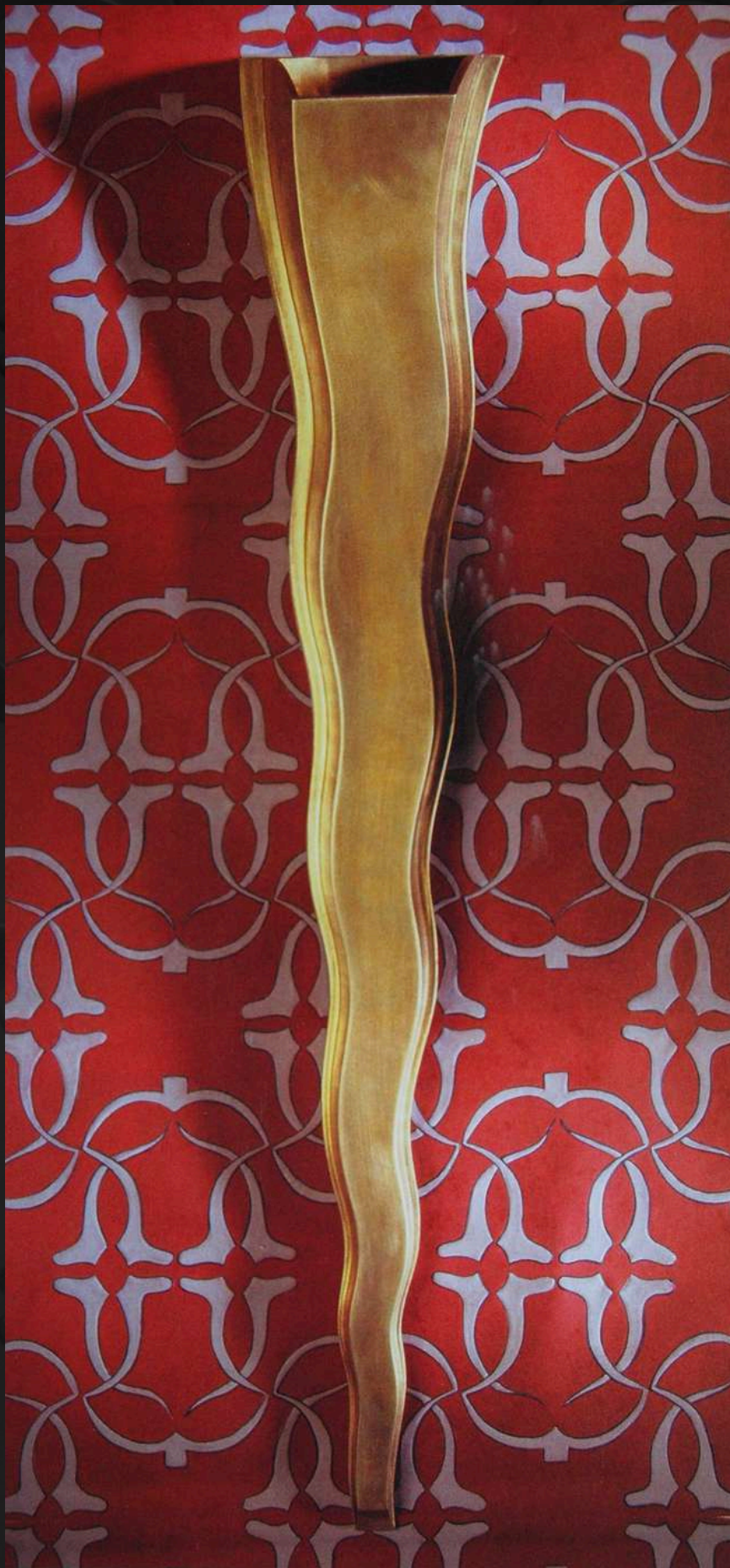




# Eve













# Fleurance

22.8 x 30.3"

58 x 77 cm

origin : Spain

Circa 1750

*A set of four polychrome panels*





# Fleurance

*Two sets of two panels*







A polychrome version on a gilded ground.  
Traditional 18th painting.







Our participation at the Liliane Bettancour  
contest "L'Intelligence de la Main".  
We didn't win.



# Gerona

31,5 x 23,6"  
80 x 60cm



origin : Spain  
Circa 1520



# Grand Soleil

47,2 x 35,4"  
120 x 90cm



*By Lutson*

Panel made of two sections



# Korfus

21,6 x 18,3"  
55 x 46,5cm



*origin : Flanders or Holland  
Circa 1750  
A Polychrome Version*



# Isabella Stewart Gardner Museum, The tapestry room.



The Korfus panel was used to re-upholster a set of dining room chairs from the **Isabella Stewart Gardner Museum**, Boston.

The original panels were ruined beyond salvation. In close cooperation with the ISGM conservators we produced the set of panels as to be seen in the Tapestry Room.

***Gianfranco Pocobene, Head of Conservation about the tapestry room :***

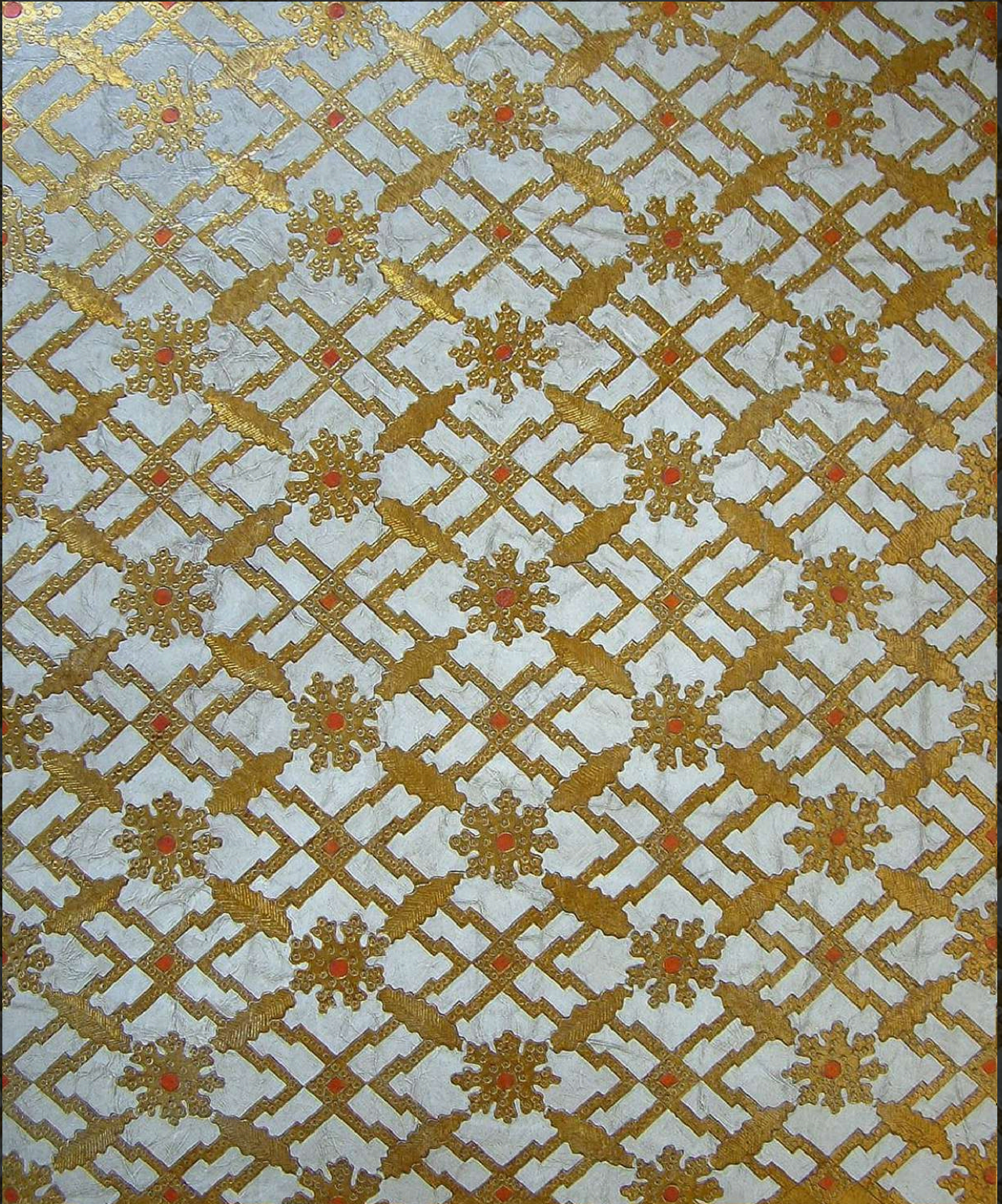
*"The tapestry room is one of the few galleries affording room to wander freely. The sense of space and openness that visitors will discover in the restored Tapestry Room will be amazing -and unexpeted for many- and a celebration of Gardner's original vision."*





# Lauderdale

32,7 x 26,4"  
83 x 67 cm



origin : Spain  
Circa 1680  
A monochrome version





An interior by Nicky Haslam





The VIP room of a  
New Bond Street jewellery shop





As seen in the "Fifth Avenue Style"



# Laurier

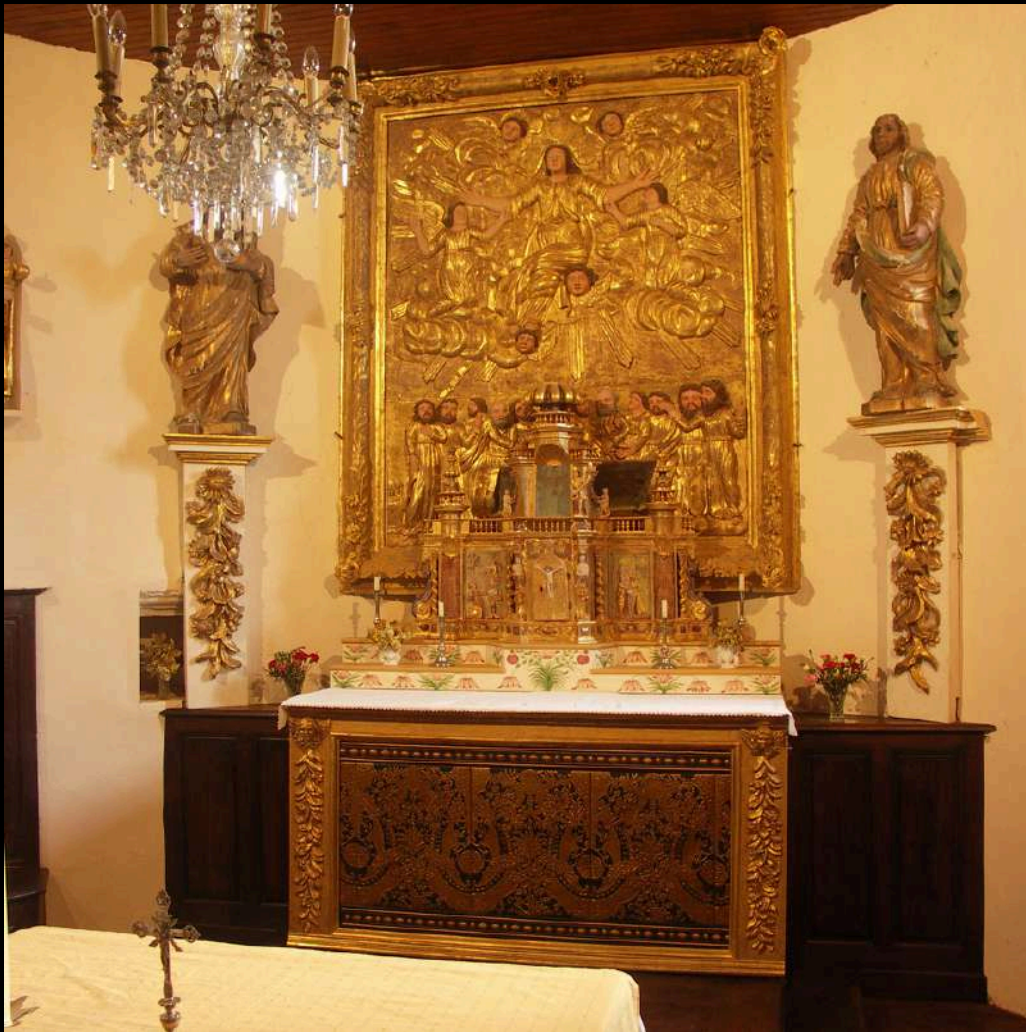
22,6 x 18,3"  
55,5 x 46,5cm



*origin : Flanders  
Circa 1715  
A Polychrome Version*



## Laurier on the Antependium Church of Mengo, France



---

Laurier in the wood-paneled bar of a stunning mansion by David Eatson





# Marot

30,1 x 24,2"  
76,5 x 61,5cm



origin : Holland  
Circa 1710  
Design by Daniel Marot

Made for Vegeholm Slott, Sweden.  
A full polychrome "traditional" 18th century version.



# Marot





The same Marot with polychrome painting on an antiqued silver ground creates a complete different atmosphere



The structure of the design seems to be partly erased by the discreet yet dominating silver ground

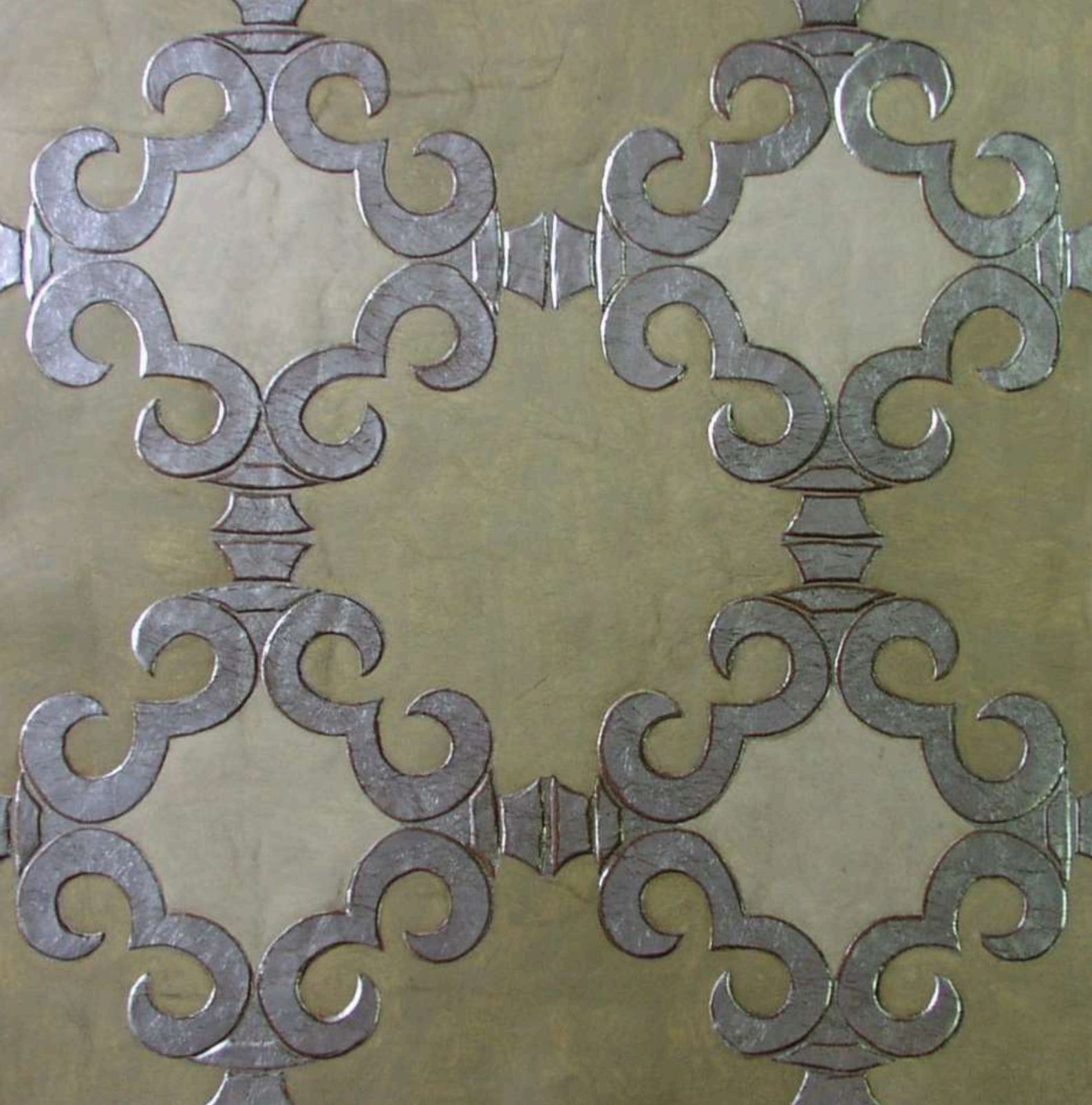




# Marot







Mandarin

29,1 x 29,1 "  
74 x 74cm







Behind the bed :  
**Mandarin**

On the right  
side :  
**Lauderdale**

Decorex,  
London.

The Mandarin is an interpretation by Lutson of a document from the Hirsch wallpaper collection.  
Circa 1700



**Mandarin** at the  
Tatiana Tafur  
Showroom,  
London





Mandarin, a full polychrome bespoke version









# Moncla

29,9 x 23,6"  
76 x 60 cm



origin : Holland, possibly a D. Marot design  
Circa 1720  
A polychrome version





At Larvik Museum, Norway.

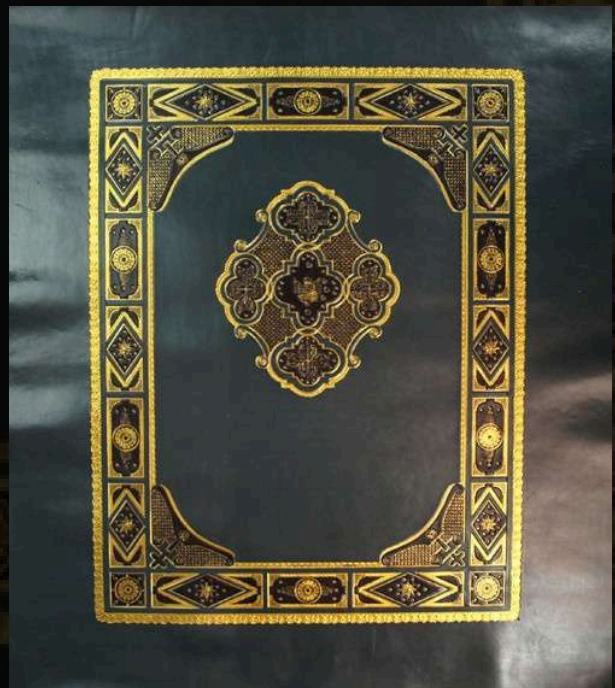






# Nebraska State Capitol

All the chairs of the Governors hearing room which dated from the 1920's had to be restored and the leather coverings replaced including those from the Counselors chairs and the Governors chair.





# Nora

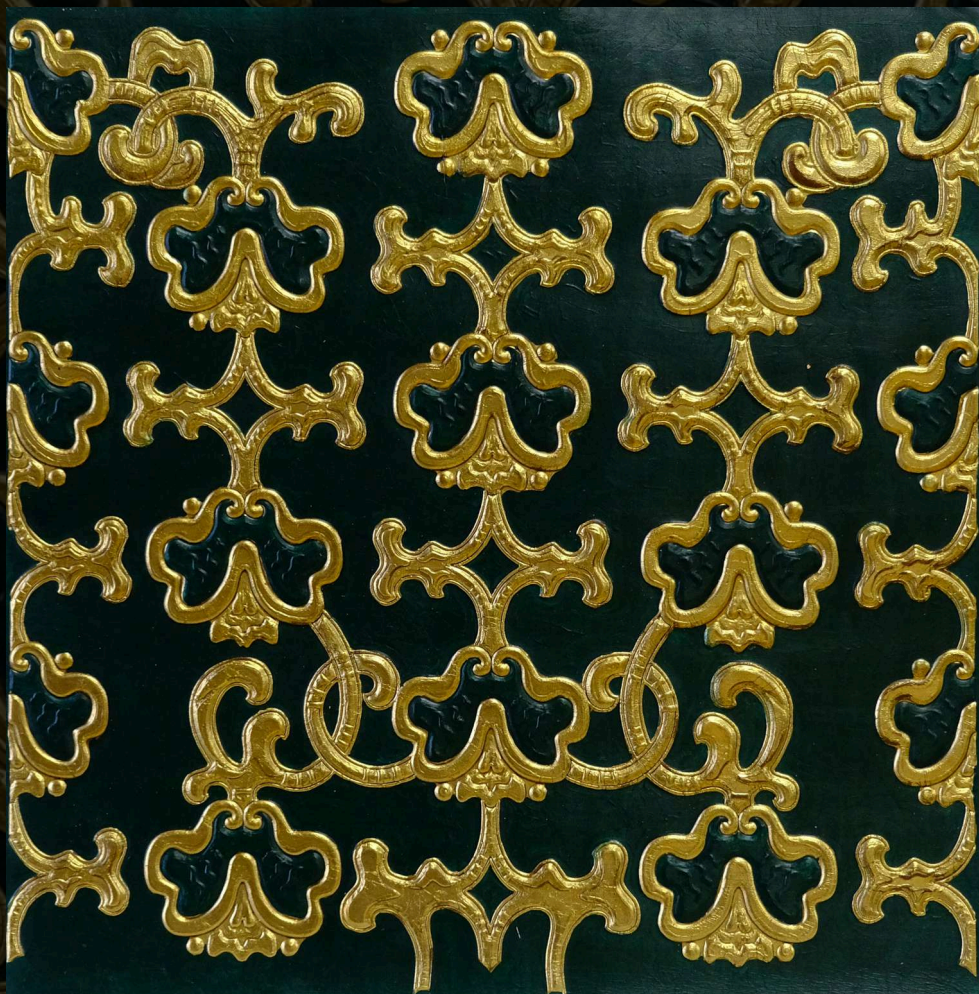
17.7 x 18.1"  
45 x 46 cm





# Nora

17.7 x 18.1"  
45 x 46 cm





# Ottoman

29,5 x 29,5"  
75x 75 cm



*An interpretation by Lutson*





The Ottoman is largely inspired by ornamental borders as seen on Humayun's tomb in New Delhi.

The mausoleum built in 1570 by Hamida Banu Begum, widow of Humayun Emperor of the Indian Mughal Empire



Decorex, London.



Leather trunk by  
Rémi Brazet and Elise Blouet  
Master craftsmen from les  
"Grands Ateliers de France"



# Ottoman

29,5 x 29,5"  
75x 75 cm



*From the Silver & Gold collection*



# Palmette

23 x 29.1"  
58,5 x 46,5cm



Slipper by Edward Green, Jermyn Street, London.





# Palmette

*origin : Flanders*

*Circa 1700*

*A Polychrome Version*

Palmette on the elevator doors of Hotel Adlon, Berlin





# Parot Panel

29,5 x 23,2"  
75 x 59cm



*A reproduction*





Levens Hall, UK.  
Manor where "Pride & Prejudice" was filmed.





# Plaisance

An interpretation by Lutson  
Traditional 18th century painting

*origin : Flanders*  
*Circa 1750*  
*A Polychrome Version*

27,4 x 31,1"  
69,5 x 79cm







# Plaisance

27,4 x 31,1"

69,5 x 79cm

Set of four panels







The original Plaisance can be seen in  
the Plantin-Moretus Museum Antwerp.







It's all in the details...



*Handmade and Savoir Faire by Lutson*





# Soleil

27,4 x 19,2"  
59 x 49cm



*By Lutson*



# Soleil

27,4 x 19,2"  
59 x 49cm



*By Lutson  
Monochrome on a silver ground*



# Soleil on a counter

By Tatiana Savadova &  
Georiy Senchenko

<https://mixinteriors.ua/>







set of chairs made by Lutson for the Hallwyl  
dining room of the Hallwyl Museum, Stockholm.





# Torino Passion

89 x 55cm

35 x 21,6"

Cutting lines at W41cm

16,14"

A semi polychrome version





Torino Passion









Heritage : MetLife Boardroom New York  
Gilt leather replicas by Lutson





# Utopia

280 x 150 cm  
110 x 58"

A fourfold screen as made during the  
Japanse Edo period

"Pièce unique"



Besides being valuable decorative items in Japan, these gilded screens were highly appreciated gifts from the Japanese to the Korean and Chinese. In Japan, gilded screens were used to create a confined and extraordinary environment where the rich and powerful could negotiate in a neutral space in which status and hierarchy were temporarily suspended.

These screens are made-to-order.







# Verentuil

28,7 x 23,6"  
73 x 60cm



origin : Holland  
Circa 1710  
A polychrome version





Verentuil in a chalet by Guy Thodoroff





Verentuil on an Antependium in the  
Church on Mont, in the Hautes-  
Pyrénées, France







Verentuil  
Set of chairs  
A monochrome version



# Vernes

40,2 x 30,7"  
102 x 78 cm



origin : Lutson

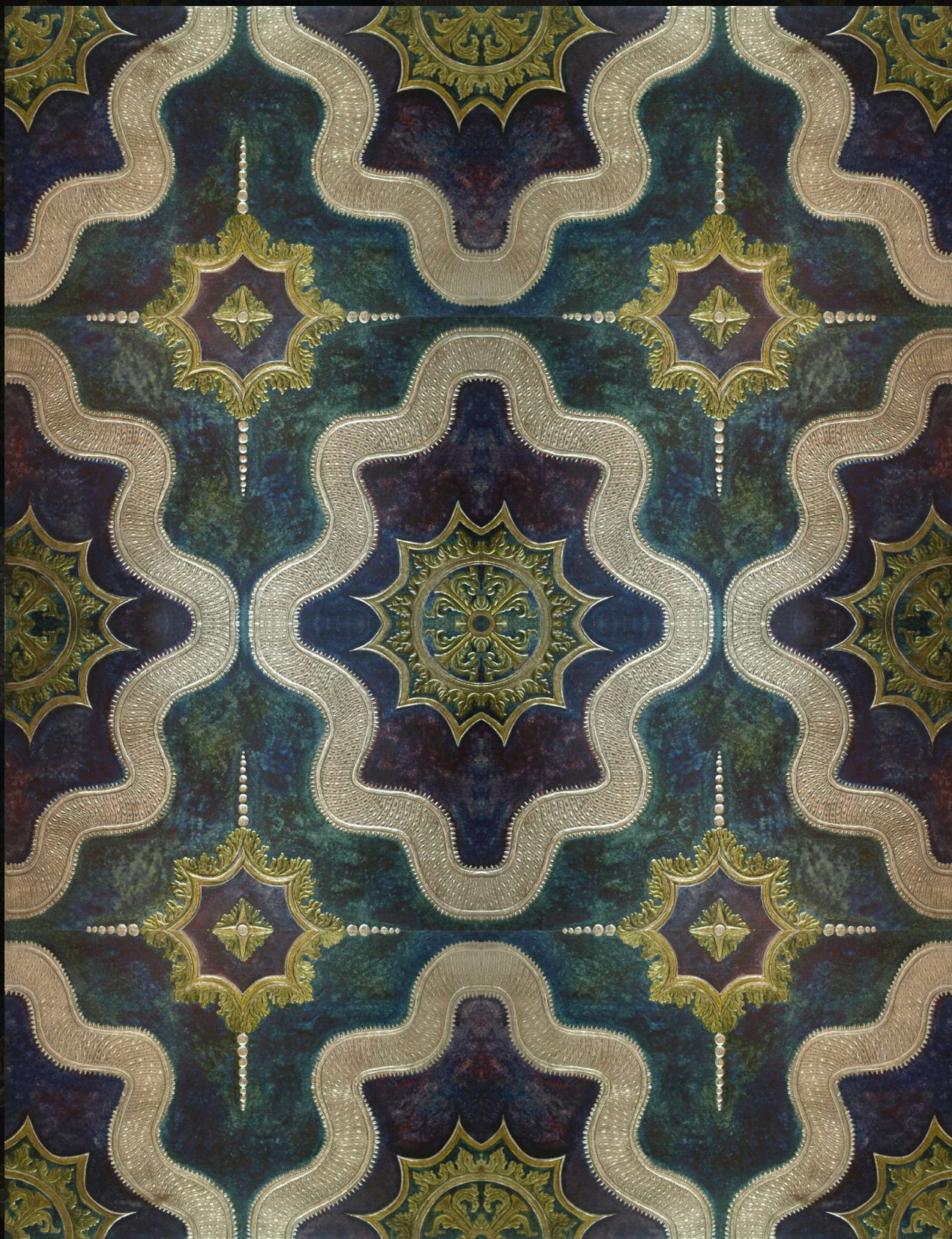
Based on an early 18th, possible late 17th century archive design

Panel made of two sections



# Vernes

40,2 x 30,7"  
102x78 cm



A set of four panel (8 sections)



# Borders

## Marot Border

Origin : Hollands  
Circa 1710

13,2 x 24,2"  
33,5 x 61,5 cm



## Flower Border

Origin : Flanders  
Circa 1670

10 x 25,6"  
25,5 x 65 cm





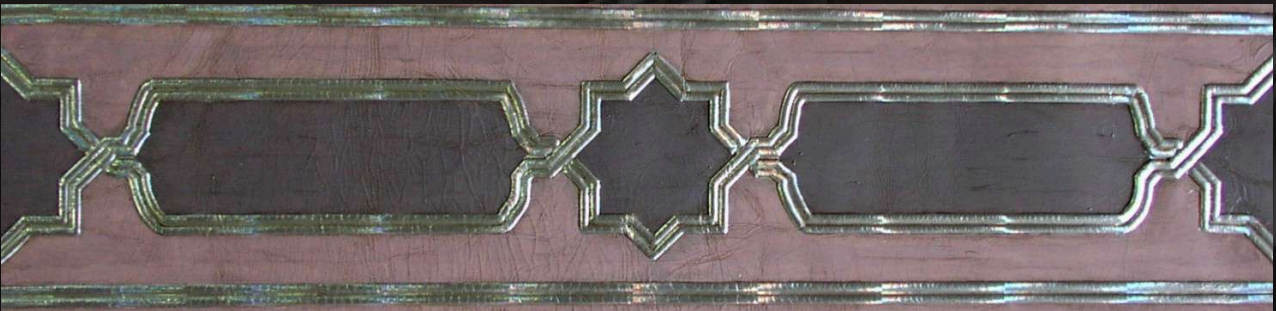
Origin : Flanders  
Circa 1670

## Rose & Tulip Border

6,3 x 23,6"  
16 x 60 cm



## Ottoman Border & Corner border.





# Prints

