

LUTSON

CATALOGUE - 2024
WWW.LUTSON.COM

GILT-LEATHER & PAPER
FOR THE 21TH CENTURY.

As good as old
Better than new



Over the years Lutson has set the standards for Gilt Leather.

From the early eighties on till the present day, our leathers stay unmatched in quality and aesthetics.

At Lutson we have decided to stick to tradition and fight the uniformity of this digital world.

Lutson Leathers as always,
Made with Passion & "Savoir Faire".

INDEX

- 4. Abondance
- 9. Almohadon
- 11. Cartouche
- 13. Curules
- 15. Deco
- 17. Double Damask
- 20. Domino
- 21. Dragon
- 24. Eve
- 27. Fleurance
- 31. Gerona
- 32. Grand Soleil
- 33. Korfus
- 35. Lauderdale
- 39. Laurier
- 41. Marot
- 45. Mandarin
- 48. Moncla
- 51. Nebraska
- 52. Ottoman
- 55. Palmette
- 58. Parot Panel
- 60. Plaisance
- 63. Soleil
- 66. Torino Passion
- 69. Utopia
- 70. Verentuil
- 74. Vernes
- 76. Borders
- 78. Prints

Abondance

31,7 x 24,8"
80,5 x 63cm
Left side



origin : Flanders
Circa 1650
A full Polychrome Version
on a silver ground

Abondance

31,7 x 24,8"

80,5 x 63cm

Right side



The classic baroque design can be seen in the Rubens House, Antwerp.

Antependium in Vic Fezensac,
Sainte-Fauste's Church, France



Made for W.H.Vanderbilt by the Herter Brother circa 1880.
This Side chair is one of the few surviving examples.
Here, upholstered with Lutson's Abundance.
Burgundy on a Rich Gilded Ground.



To be seen in the "American Wing" of the
Metropolitan Museum of Art, N.Y.



*"Atelier Versace
used gilded leather
made by Lutson "*

*At the Parisian Haute
Couture défilé
1999 / 2000.*

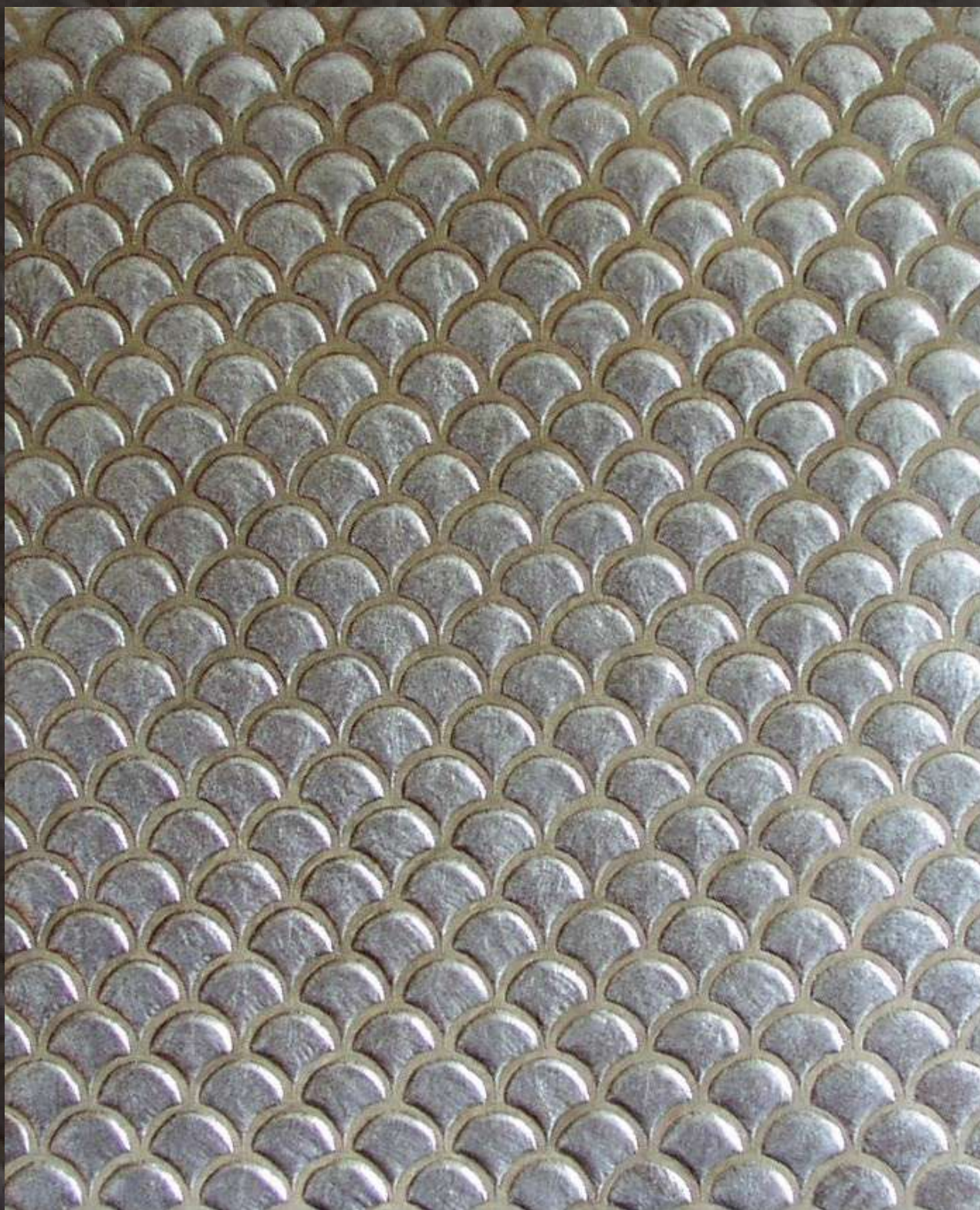
*Naomi Campbell showed
an gilded leather ensemble
created by Atelier Versace.*

*Abondance, beige on a silver
ground with gilded birds.*

Photo from Vogue

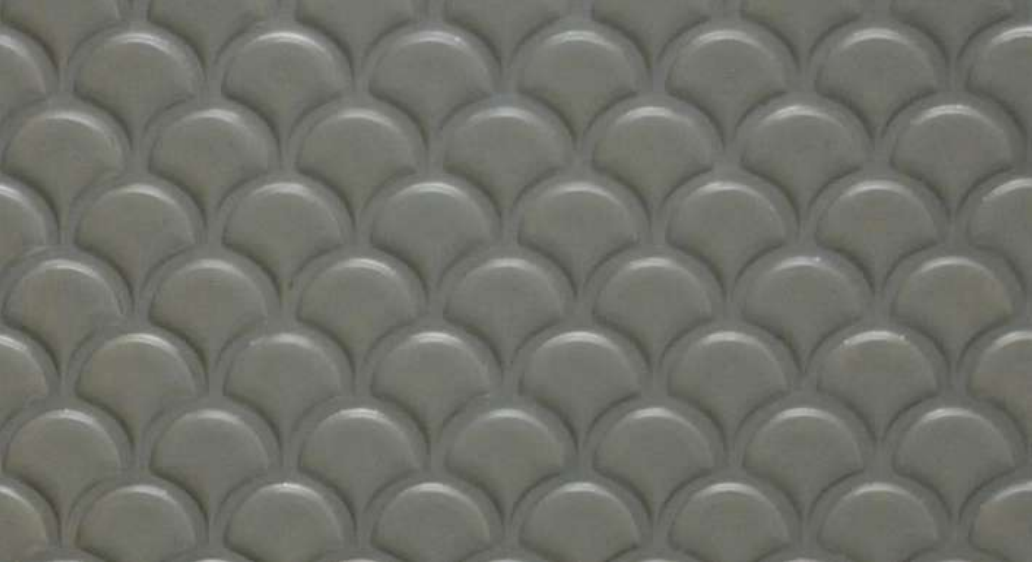
Almohadon

29,5 x 25,6"
75 x 65cm



origin : Antiquity

*A panel from circa 1500 is to be seen in the **Museu de l'Art de la Pell**, Spain.*



Cartouche

28,3 x 22"
71,8 x 22,95cm



Origin: unknown

This design can be seen at the "Deutches Tapeten Museum", Kassel Germany.

Circa 1750

This design has a left and a right hand panel. Here as a polychrome "custom" version

Cartouche



Curules

28,3 x 26"
72 x 66 cm



origin : Antiquity

Curules

28,3 x 26"
72 x 66 cm



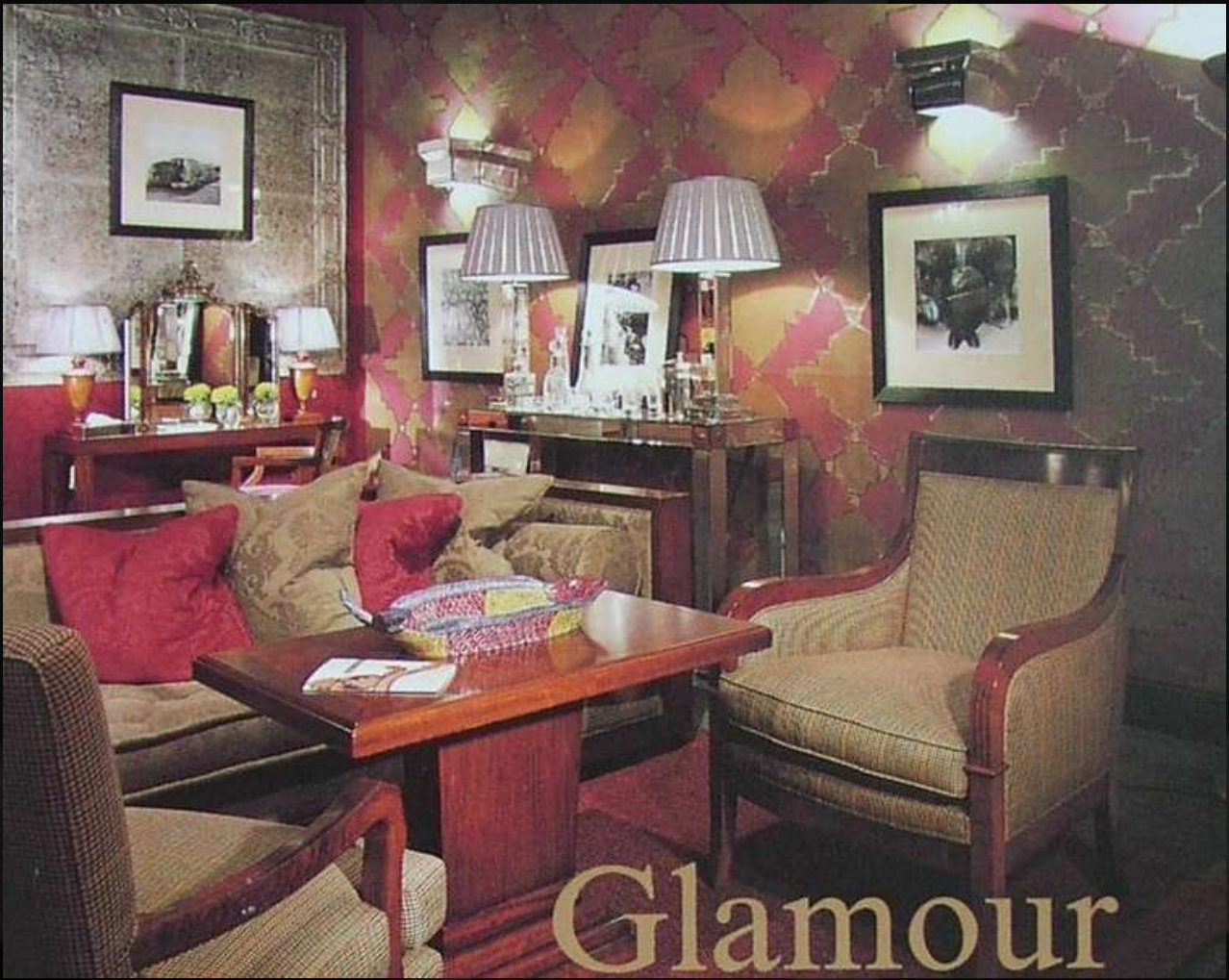
origin : Antiquity

Deco

35,6 x 25,6"
90,5 x 65cm



origin : Lutson



Décorex, London.

Double Damask

39,4 x 29,1"
100 x 74 cm



a set of four sections is needed to create one panel



Double Damask

a set of four sections is needed to create one panel

39,4 x 29,1"
100 x 74 cm

*origin : possibly Spain
Circa 1680*

Double Damask in a yacht.



Double Damask for Fitzgerald.

Domino

31,5 x 22"
80 x 56cm



origin : Lutson
Based on a 17th century Spanish design.

Dragon

30,5 x 23,4"
77,5 x 59,5cm



origin : Flanders
Circa 1750
A polychrome version

Dragon



At Sarum Chase, London.



Eve

34,6 x 26"
88 x 69cm



Eve





Fleurance

22.8 x 30.3"

58 x 77 cm

origin : Spain

Circa 1750

A set of four polychrome panels



Fleurance

Two sets of two panels





A polychrome version on a gilded ground.
Traditional 18th painting.





Our participation at the Liliane Bettancour
contest "L'Intelligence de la Main".
We didn't win.

Gerona

31,5 x 23,6"
80 x 60cm



origin : Spain
Circa 1520

Grand Soleil

47,2 x 35,4"
120 x 90cm



By Lutson
Panel made of two sections

Korfus

21,6 x 18,3"
55 x 46,5cm



*origin : Flanders or Holland
Circa 1750
A Polychrome Version*

Isabella Stewart Gardner Museum, The tapestry room.



The Korfus panel was used to re-upholster a set of dining room chairs from the **Isabella Stewart Gardner Museum**, Boston.

The original panels were ruined beyond salvation. In close cooperation with the ISGM conservators we produced the set of panels as to be seen in the Tapestry Room.

Gianfranco Pocobene, Head of Conservation about the tapestry room :

"The tapestry room is one of the few galleries affording room to wander freely. The sense of space and openness that visitors will discover in the restored Tapestry Room will be amazing -and unexpeted for many- and a celebration of Gardner's original vision."



Lauderdale

32,7 x 26,4"
83 x 67 cm



origin : Spain
Circa 1680
A monochrome version



An interior by Nicky Haslam



The VIP room of a
New Bond Street jewellery shop



As seen in the "Fifth Avenue Style"

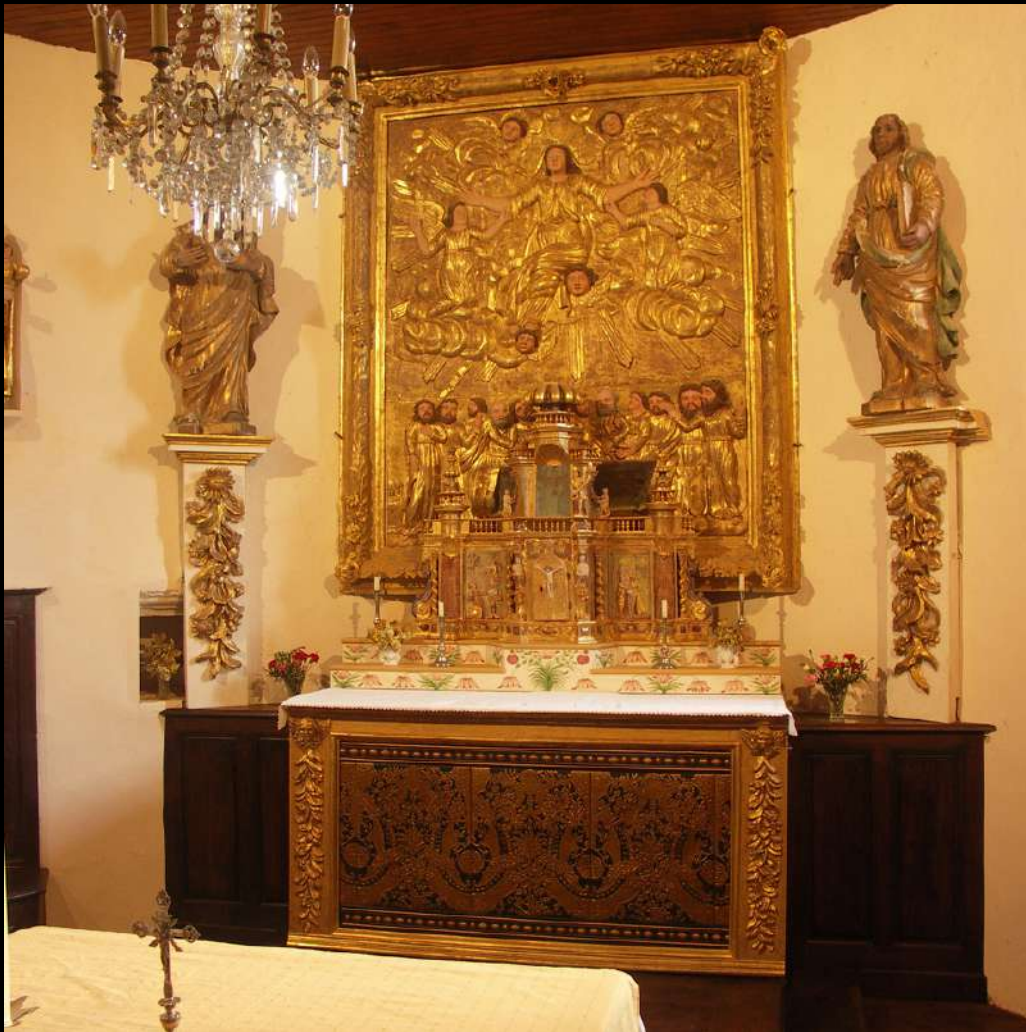
Laurier

22,6 x 18,3"
55,5 x 46,5cm



*origin : Flanders
Circa 1715
A Polychrome Version*

Laurier on the Antependium Church of Mengo, France



Laurier in the wood-paneled bar of a stunning mansion by David Eatson



Marot

30,1 x 24,2"
76,5 x 61,5cm



origin : Holland
Circa 1710
Design by Daniel Marot

Made for Vegeholm Slott, Sweden.
A full polychrome "traditional" 18th century version.

Marot



The same Marot with polychrome painting on an antiqued silver ground creates a complete different atmosphere

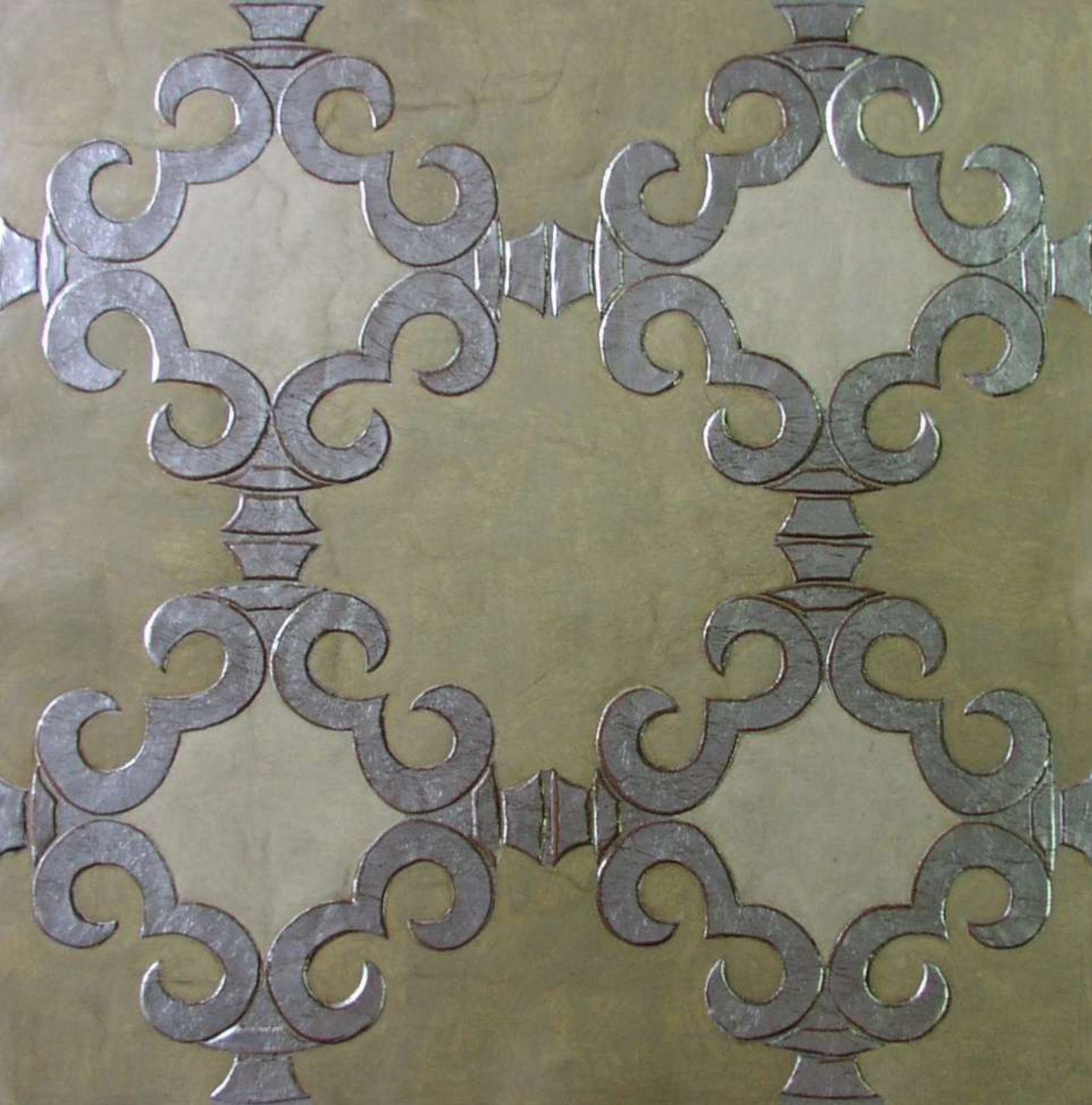


The structure of the design seems to be partly erased by the discreet yet dominating silver ground



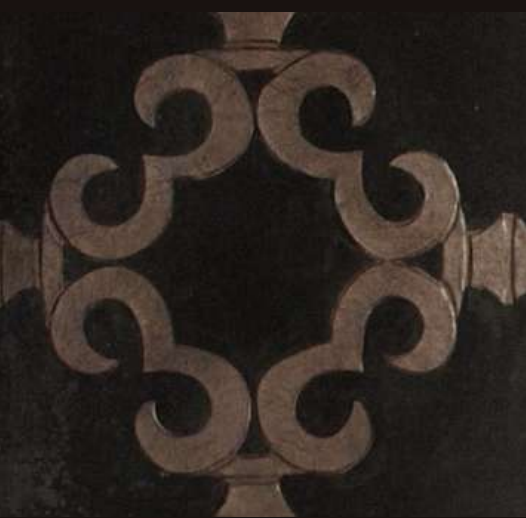
Marot





Mandarin

29,1 x 29,1 "
74 x 74cm





Behind the bed :
Mandarin

On the right
side :
Lauderdale

Decorex,
London.

The Mandarin is an interpretation by Lutson of a document from the Hirsch wallpaper collection.
Circa 1700



Mandarin at the
Tatiana Tafur
Showroom,
London



Mandarin, a full polychrome bespoke version



Moncla

29,9 x 23,6"
76 x 60 cm



origin : Holland, possibly a D. Marot design
Circa 1720
A polychrome version





At Larvik Museum, Norway.

Nebraska State Capitol

All the chairs of the Governors hearing room which dated from the 1920's had to be restored and the leather coverings replaced including those form the Councilors chairs and the Governors chair.



Ottoman

29,5 x 29,5"
75x 75 cm



An interpretation by Lutson



The Ottoman is largely inspired by ornamental borders as seen on Humayun's tomb in New Delhi.

The mausoleum built in 1570 by Hamida Banu Begum, widow of Humayun Emperor of the Indian Mughal Empire

Decorex, London.



Leather trunk by
Rémi Brazet and Elise Blouet
Master craftsmen from les
"Grands Ateliers de France"

Palmette

23 x 29.1"
58,5 x 46,5cm



Slipper by Edward Green, Jermyn Street, London.



Palmette

Palmette on the elevator doors of Hotel Adlon, Berlin

origin : Flanders

Circa 1700

A Polychrome Version





It's all in the details...



Handmade and Savoir Faire by Lutson



Parot Panel

29,5 x 23,2"
75 x 59cm



A reproduction



Levens Hall, UK.
Manor where "Pride & Prejudice" was filmed.



Plaisance

An interpretation by Lutson
Traditional 18th century painting

origin : Flanders
Circa 1750
A Polychrome Version

27,4 x 31,1"
69,5 x 79cm





Plaisance

27,4 x 31,1"

69,5 x 79cm

Set of four panels





The original Plaisance can be seen in the Plantin-Moretus Museum Antwerp.



Soleil

27,4 x 19,2"
59 x 49cm



By Lutson

Soleil

27,4 x 19,2"
59 x 49cm



By Lutson
Monochrome on a silver ground

Soleil on a counter

By Tatiana Savadova &
Georiy Senchenko

<https://mixinteriors.ua/>





Torino Passion

89 x 55cm

35 x 21,6"

Cutting lines at W41cm

16,14"

A semi polychrome version



Torino Passion



Utopia

280 x 150 cm
110 x 58"

A fourfold screen as made during the
Japanese Edo period

“Pièce unique”



Besides being valuable decorative items in Japan, these gilded screens were highly appreciated gifts from the Japanese to the Korean and Chinese. In Japan, gilded screens were used to create a confined and extraordinary environment where the rich and powerful could negotiate in a neutral space in which status and hierarchy were temporarily suspended.

These screens are made-to-order.

Verentuil

28,7 x 23,6"

73 x 60cm



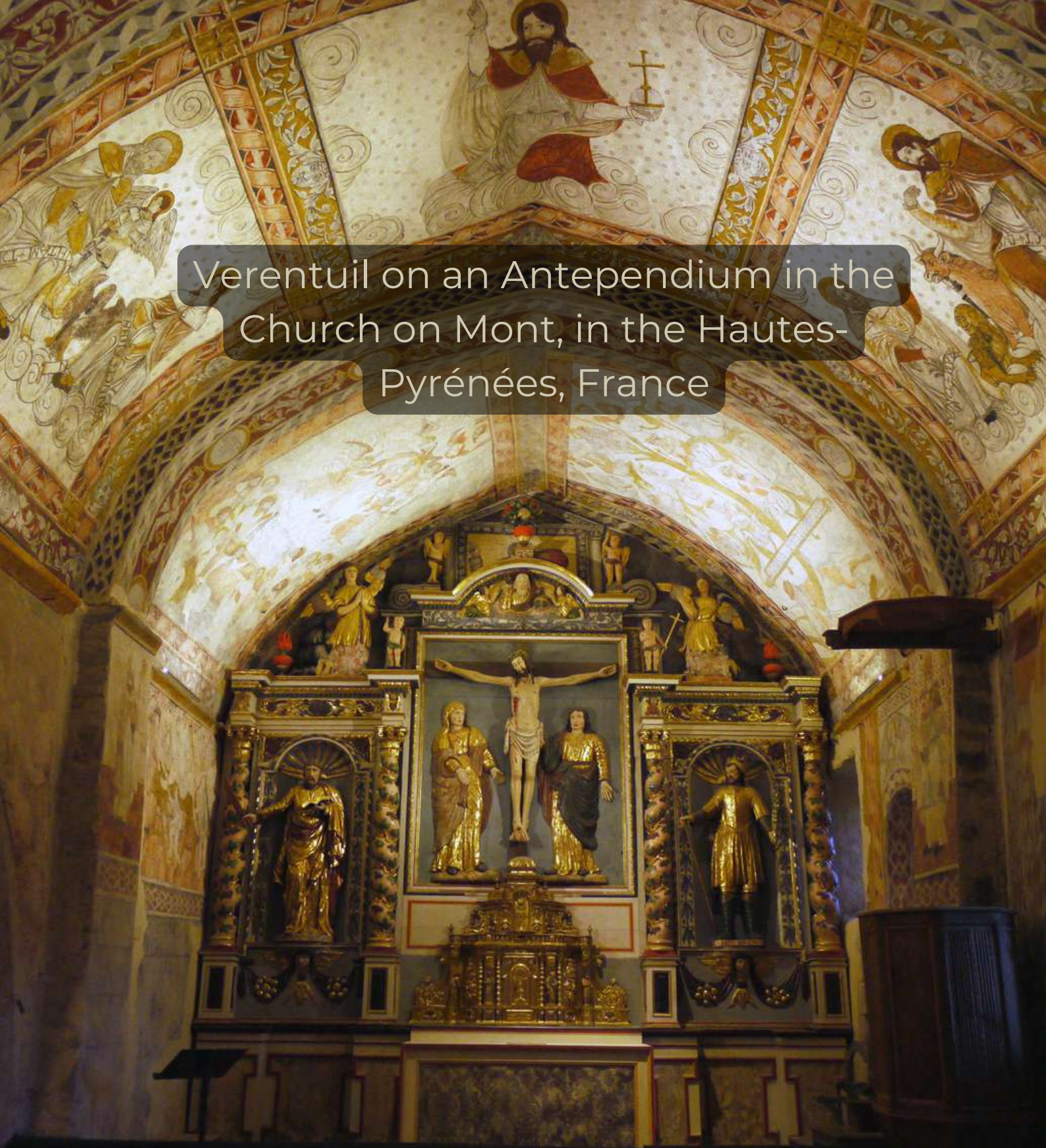
origin : Holland
Circa 1710
A polychrome version



Verentuil in a chalet by Guy Thodoroff



Verentuil on an Antependium in the Church on Mont, in the Hautes-Pyrénées, France





Verentuil
Set of chairs
A monochrome version
73

Vernes

40,2 x 30,7"
102 x 78 cm



origin : Lutson

Based on an early 18th, possible late 17th century archive design

Panel made of two sections

Vernes

40,2 x 30,7"
102x78 cm



A set of four panel (8 sections)

Borders

Marot Border

Origin : Hollands
Circa 1710

13,2 x 24,2"
33,5 x 61,5 cm



Origin : Flanders
Circa 1670

Flower Border

10 x 25,6"
25,5 x 65 cm



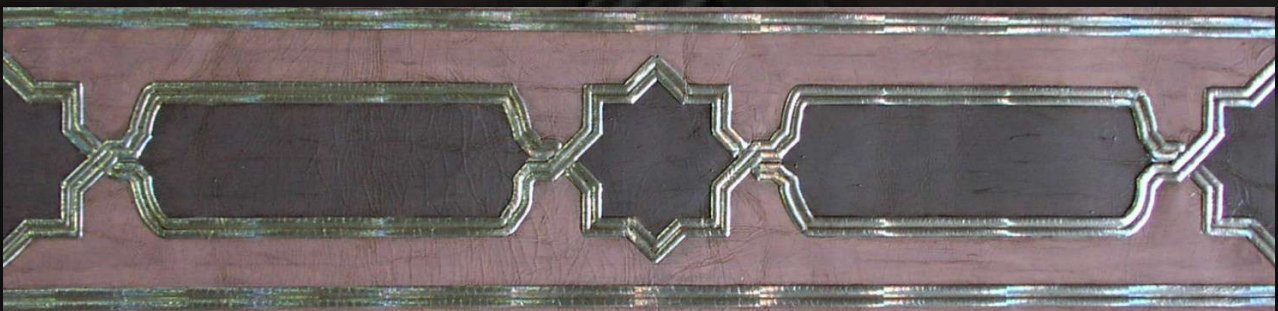
Rose & Tulip Border

Origin : Flanders
Circa 1670

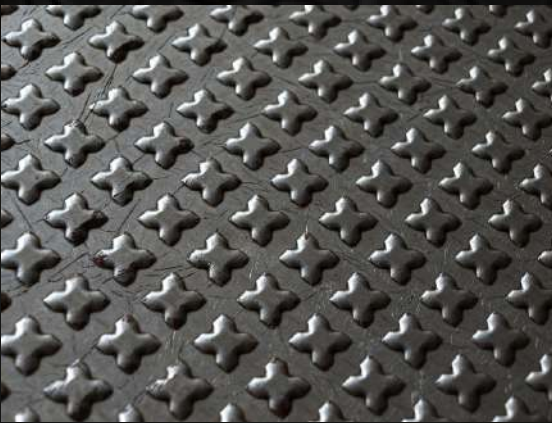
6,3 x 23,6"
16 x 60 cm



Ottoman Border & Corner border.



Prints





Heritage : MetLife Boardroom New York
Gilt leather replicas by Lutson





set of chairs made by Lutson for the Hallwyl dining room of the Hallwyl Museum, Stockholm.